

Level 1

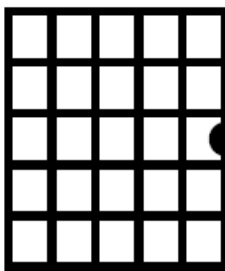


A chord is just notes that sound good together being played simultaneously.

Your First Chords!

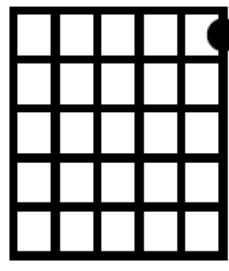
G

X X X O O



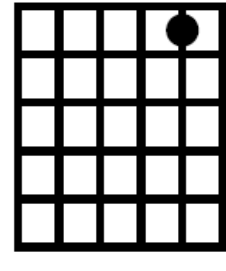
G7

X X X O O



C

X X X O O



Reading Chord Charts:

- The horizontal lines are the frets of the guitar
- The vertical lines are the strings of the guitar
- The black dots are where you place your fingers
- An X over a string means you do not play that string.
- An O over a string means you play that string without fretting any notes, or "open."


Helpful Tips:

- Make sure to press nice and hard on the notes you have to finger.
- Keep your fingers in an arc and play with the very tips of them to avoid muting a string you don't intend to play.
- Keeping your thumb behind the neck can help naturally arc your fingers.

Let's Make Music with these Chords!

Strumming

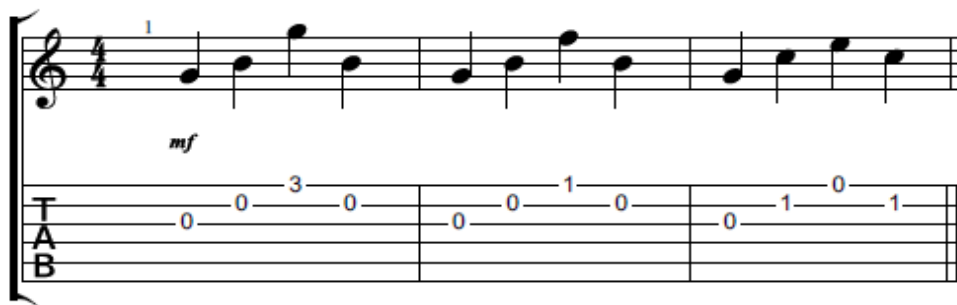
G- Down, Up, Down, Up
G7-Down, Up, Down, Up
C- Down, Up, Down, Up



The goal is to make all three strings have one consistent sound. This is especially hard with the up strokes.

Arpeggios are chord shapes played one note at a time, rather than all at once. You can get all types of cool and interesting sounds with different arpeggio patterns. The pattern below is a great one to start with.

Arpeggios



Arpeggio
Idea 1

You can use these 3 chords to make all types of arpeggio patterns. You can even try changing the order of the chords or mix arpeggios with strumming ideas! Experiment, have fun, and write some of your own music!

Musical notation for Arpeggio Idea 2. The top staff is in 4/4 time, starting with a treble clef and a key signature of one sharp (F#). The melody consists of eighth notes: G4 (quarter rest), A4 (quarter rest), B4 (quarter rest), C5 (quarter rest), D5 (quarter rest), E5 (quarter rest), F#5 (quarter rest), G5 (quarter rest). The bottom staff is a guitar TAB with three strings labeled T, A, and B. The fret numbers are: T (3, 0, 3, 1, 1, 0, 0), A (0, 0, 0, 0, 0, 1, 0), and B (0, 0, 0, 0, 0, 0, 0). The dynamic marking *mf* is placed below the first staff.

Arpeggio
Idea 2

Musical notation for Arpeggio Idea 3. The top staff is in 4/4 time, starting with a treble clef and a key signature of one sharp (F#). The melody consists of eighth notes: G4 (quarter rest), A4 (quarter rest), B4 (quarter rest), C5 (quarter rest), D5 (quarter rest), E5 (quarter rest), F#5 (quarter rest), G5 (quarter rest). The bottom staff is a guitar TAB with three strings labeled T, A, and B. The fret numbers are: T (1, 0, 0, 1, 0, 3, 3), A (0, 0, 0, 0, 0, 0, 0), and B (0, 0, 0, 0, 0, 0, 0). The dynamic marking *mf* is placed below the first staff.

Arpeggio
Idea 3

Write some of your own ideas here!

Teacher's Notes: