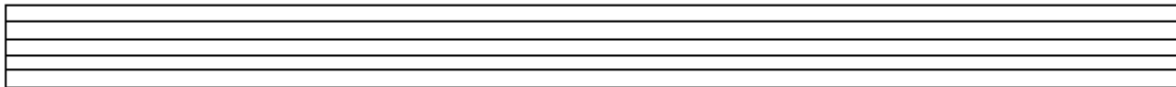


Reading Tablature

Tablature, or “tab” is another way guitar players can read music. Though it is important to learn how to read traditional notation, tab can be a great way to learn your favorite songs a bit easier and clear up some confusion standard notation can create.



- *Unlike standard notation, tablature has 6 lines. Each one represents a string on the guitar.*
- *The bottom most line, represents the thickest string on your guitar-The Low E. The top most line represents the thinnest string on your guitar-The High E. All of the other lines represent the strings in order, respectively.*
- *The numbers written on a line represent the frets. A 3, would mean the third fret, an 11 would mean the 11th fret, and so on.*
- *The line that the fret is marked on is the string where you would play the fret shown. For example, if a 4 was written on the top most string, you would play the 4th fret of the High E string. If an 8 is written on the second from the bottom line, you would play the 8th fret of the A String.*
- *A 0 written on a line represents playing that string “open.” Playing a string open means you pick the string and let it ring, but without fretting anything down with your left hand.*
- *You then just play everything that is written, in order, from left to right.*